



The Palm Beach Watercolor Society is a 501(c)3 non-profit organization promoting excellence and education in all forms of watermedia. Watermedia include watercolors, gouache and acrylic, amongst others and it is sometimes combined with other media.

PROGRAM SCHEDULE 2011—2012

- November 10 TBA
December 8 Jane Bazinet
January 12 Ted Nuttall
February 9 Carol Ann Sherman
March 8 Susan Hanssen
April 12 Sally Cooper
May 10 Marian Axley, NWS, FWS, GWS, WSA – FWS 2010 Slide Critique

NEWSLETTER

Editor:
Donna Walsh Warren

Features Editor:
Flora Zolin

Mailing:
Paula Adams

PBWS NEWSLETTER

*Palm Beach County's Most Exciting
Watermedia Society*

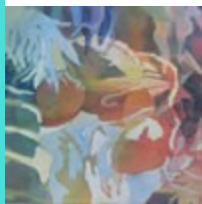
OCTOBER 2011

www.pbwatercolor.org

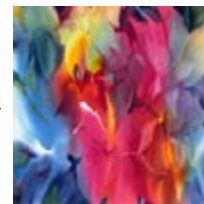
NEXT MEETING OCT 13, 2011 6:30 PM

Boca Community Center, 150 Crawford Blvd. Boca Raton.

[TERESA KIRK FWS, SW, GCWS](#)



Teresa paints in watercolor and mixed media. Her work often portrays the rhythms of life with layers that build up as we experience that life. Teresa often paints



Plein Air to capture life in its element. She loves to work in any medium that captures her intent at the mo-

ment. She is currently Director of Operations for Florida Watercolor, Recording Secretary Broward Art Guild and Workshop Chairperson of Goldcoast Watercolor Society.

NEW PROGRAM - STUDIO TIME

We are happy to announce the new and exciting concept for the 2nd & 4th Tuesdays: **FREE Studio Time for Members.** There will be a nominal charge for guests. This program will be held in the Silver Palm room of the Boca Raton Community Center at 150 Crawford Blvd. Boca Raton from 9:30 AM - 12:30 PM. The program will run from November to April and will feature a different PBWS artist who will give focus to the Studio time.

Dona Nenner & Joan Starr, PBWS Studio Time Coordinators

PRESIDENT'S LETTER

The PBWS board and committees have been busy over the summer and a great season is planned for 2011 – 2012. As president I have outline the following goals to the board for the coming fiscal year.

Define what is included in watermedia for PBWS – This will in turn impact our events, shows, demos and workshops. Palm Beach Watercolor Society seeks to promote excellence and education in all forms of watermedia to its members and to the public while at the same time still honoring our roots in traditional watercolor.

Build Membership – This will include having a membership campaign to build up our membership roster, produce a new membership directory, have signature member award ceremony, and highlight member talent on website.

Organizational Development & Community Outreach – We will again join the Palm Beach Cultural Council, will join for the first time this year the Delray Beach Chamber of Commerce, will make strategic plans for fundraising and expand events to include an online exhibit and possibly initiate an annual plein air event.

But it takes all of us. I would like to thank the board and all the member volunteers who work during the year and have been hard at work over the summer. I will be asking all members to step up and take on volunteer jobs to ensure that PBWS continues to grow and develop in accord with the organizations mission and vision.

Donna Walsh, PBWS president

NOTICES

- Janet Davis has a one-woman show at the Center for Spiritual Living (formerly Science of Mind Center) during the month of September.
- Carol Z. Brody NWS won Third Place in the Louisiana Watercolor Society's 41st International Exhibition, May 7-27, for her painting, "Party Papers, Ribbons and Confetti III." which was also accepted into the Florida Watercolor Society's 40th Annual Exhibition at Art Center Manatee in Bradenton, FL, Sept. 6-Oct. 29. The juror was John Salminen. Carol's work will also be published in the next edition of "Best of America-Watercolor," by Kennedy Publishers.
- Grace Fishenfeld's artist book will be on display along with the South Florida Calligraphy Guild. The Artist Book Show, titled FOR THE LOVE OF BOOKS, is hosted at the Arthur and Maita Jaffe library, on the 3rd floor of the Florida Atlantic University, part of the Wimberly Library, on Glades Road in Boca Raton. The exhibition opens on Sept. 10, at 12:00 and closes Oct. 16.
- Dodi Sikevitz won an award at Women In The Visual Arts' Exhibition, "Possibilities III" at the Coral Springs Museum of Art.
- **PBWS "Art Supplies to Elementary Schools"**
 - Boca Raton Elementary, Annie Seaberry, Art Instructor thanks the PBWS very much for previous art supplies given by us in the last two years.
 - Deerfield Beach Elementary (New School) Suzanne Clark, Art Instructor. She said Please Thank the PBWS .
 - J. C. Mitchel Elementary School, Boca Raton, Christine Lyons, Art instructor Mrs. Lyons said PBWS should be thanked for their generosity.
 - Quiet Water Elementary Tami Somers, Art Instructor. 3rd year with PBWS for Art Supplies Tami said Thank you very very much and the kids will write you "thank you's" because it is a great idea and I Thank you PBWS.
 - Hagen Elementary School, Ashley Ellis, Art Instructor Has received art supplies from PBWS in the two prior years.. Thank PBWS
- **NEW DVD's for the PBWS Member DVD lending library**
 - Painting Streams, Rocks and Trees in Watercolor with Tony Couch
 - Dancing with Yupo: Tools & Techniques with Taylor Ikin
 - A Designed Approach to Abstraction with John Salminen
 - Urban Landscape in Watercolor with John Salminen
 - Color Power: The Path to Visualizing Energetic Color with Carl Dalio
 - Getting Started Right in Watercolor with Jan Kunz
 - Watercolor from Within: Transparent Layering with Barbara Nechis
 - Portraits in Watercolor with Charles Reid



Painting, n.: The art of protecting flat surfaces from the weather, and exposing them to the critic.

Ambrose Bierce

WELCOME to NEW MEMBERS

Lydia Schwartz
Lynn Travis Stender
Jackie Lyles
Ava Debonis

Why Watercolor

What are your reasons for painting with watercolor? Immediacy, challenge, unpredictability, uncontrollable nature, the magic of the medium or something else. Why watercolor, why watermedia??

14TH SEASON WORKSHOPS 2011-2012

Boynton Beach Woman's Club
 1010 S. Federal Highway, Boynton Beach, Florida 33425 561 369-2300
 9:00 - 4:00 p.m. (30 - 45 minutes for Lunch)



TED NUTTALL AWS, NWS, TWS
Jan. 11, 12, 13, 2012
Portrait Workshop
\$325. Members \$350. Non-members

A nationally known watercolor artist and workshop instructor. This workshop is for every watercolorist wanting to have spontaneity, character & life in their figure paintings.
[Ted Nutall Workshop Registration Form](#)



CAROL ANN SHERMAN FWS, PBWS
FEB. 15 - 16, 2012
"Do it on Yupo" workshop
\$160. Members \$190. Non-members

Known for her extraordinary artistic talents with watercolor on yupo. Thus she has been appropriately given the title, "The Princess of Yupo"
[Carol Ann Sherman Workshop Registration Form](#)



SUSAN HANSSEN NWS, FWS
March 7 - 8, 2012
Painting on Gold Gesso
\$160. Members \$190. Non-members

Innovative watercolor / water media artist and workshop instructor, by popular demand will be visiting us again, teaching us her award winning specialty : painting on gold gesso with watercolor and gouache.
[Susan Hanssen Workshop Registration Form](#)



Workshop Application

Name.....

Address.....

Phone #'s.....

Email.....

WORKSHOP: Ted Nuttal Carol Ann Sherman Susan Hanssen

For each workshop, please send your \$100 deposit, or your payment in full payable to PBWS to :
 Flora Zolin,
 7981 Monarch Court
 Delray Beach, FL 33446
 \$100.00 deposit to register per class.
 Non-refundable but may be used toward another PBWS workshop within a year.

EVENTS, EXHIBITS & SHOWS

2011-2012 Exhibitions

Armory Art Center - MEMBER ONLY SHOW

1700 PARKER Ave.

West Palm Beach, FL 33401

Take in November 2, 10AM - 12 noon

Take down December 5, 10AM - 12 noon

Reception December 4, 6PM - 8 PM

November 4 - December 3, 2011

30% commission to Armory, 10% to PBWS price accordingly

[PROSPECTUS](#)

Sugar Sands Community Center, Boca Raton

Annual Members Showcase

S Military between Palmetto & Camino Real

Reception Jan 7th, 2012 1 -3 PM

Take in: Dec 30, 2011 10 AM - 12noon

Take down: Jan 26, 2012 10 AM - 12 noon

December 31 2011- January 25, 2012

Coral Springs Museum of Art

29th Annual Open Juried Show

2855 Coral Springs Drive

Reception, TBA

Take in: Tuesday, March 6, 10 AM - 12 noon

Take down: Monday, April 2, 10 AM - 12 noon

March 7 - April 1, 2012

Boca Raton Community Center Exhibit- 2012

Month of April 2012 -details TBA

PAINT OUTS 2011 - 2012

1st & 3rd Tuesdays of the month

9:30 AM - 12:30 PM

Various Locations Palm Beach, Broward and Dade Counties - Contact Judy Thurau (561) 482-0383 or

judythurau@att.net or check Meetup Web Page

<http://www.meetup.com/palmbeachartists/>

Oct 4, 2011 Lake Worth Beach/Kreusler Memorial Park Side 50 South Ocean Blvd, Lake Worth, FL Lots here, beach, fisherman, the pier. Good parking.

Oct 18, 2011 Green Cay Nature Center & Wetlands 12800 Hagen Ranch Road, Boynton Beach, FL is always a favorite place

STUDIO TIME 2011 -2012

2nd and 4th Tuesdays of the month

9:30 AM - 12:30PM

Contact Dona Nenner (561) 362-5506 -

neroda@bellsouth.net or Joan Starr-

jes815@aol.com Dona N & Joan have a wonderful

program planned for this new concept of STUDIO

TIME

Also see <http://www.meetup.com/palmbeachartists/> for spontaneous paint-ins and paint-outs

PBWS Officers and Directors 2010 -2011		
Donna Walsh, President	artist@walshwarren.com	561-499-3046
Lynn Holland, Vice President	laplume366@aol.com	561 638-9927
Peter Notaro, Secretary, Membership	pjn8@columbia.edu	561 381-7835
Adrienne Walker, Treasurer	walkertrvl@aol.com	561-498-3605
Paula Adams, Communications / Guests	ososlo@bellsouth.net	561-417-3742
Pat Boldizar, Historian / Public Relations	pcbaldizar@bellsouth.com	561-395-1052
Genia Howard, DVD Librarian / Membership	geniahow@bellsouth.net	561 276-5110
Sharon Jacobs, Shows & Workshops	stonewomon@aol.com	561-347-7929
Donna Jenner, Shows & Programming	ehjenner@aol.com	561 997-6151
Carol St. Cyr, Membership, Public Relations	nyospace@gmail.com	561-416-7248
Marilyn Young, Shows, Racks, PR	gymy@bellsouth.net	954-972-7222
Flora Zolin, Workshops, Newsletter Feature	flora.zolin@gmail.com	561 865-0013

ARTIST of THE MONTH

Donna Walsh



Donna Walsh Warren began painting early in life and took a break for a career in science and technology. The following describes her approach. I'm drawn to watercolor by its transparency and the way light interacts with it. I tried to be meticulous in my work, something that came naturally with my background in science. However, now there is spontaneity, a freedom, that I hadn't felt before. The image flows freely from my brush. Planning is a "before thing." Something that occurs before my fingers touch the brush and the brush touches the color. After that, it is a time of emotion and caress of brush against paper. In my

search for a distinct aesthetic voice, I've been doing landscapes, figures and floral's, but such a process takes time, and at this time, my heart holds a tumult of the learned and sensed. Wining them through experience is refining the apparent cacophony is a matter of time and experience. My decision process is a merger of careful planning and inspiration. This was operative in paint, brush paper selection and just about every tool needed. In other words, left brain activity in the planning. But once I begin, I shift to the right brain and allow the paints and the images before me to guide the brush.



Each painting begins with a story or emotion I want to share. Painting is a very spiritual thing to me. In painting, time and space vanish and I'm part of the cosmos rather than outside and observing. It isn't a linear process because the act of painting opens new windows to what I want to paint. I love colors; working spontaneously and watching the image and the emotion take shape on the paper. When I paint, it's collaboration between my soul and my training with each overcoming the limitations of the other and supporting its strengths. I hope a viewer can feel a sense of intimate engagement. I want them to see the communication my own soul received from what I was looking at expressed in a tangible form. Donna is a member of the Delray Art League, Memphremagog Arts Collaborative and the Palm Beach Watercolor Society. She resides in Delray Beach, Florida and Barton, Vermont. More of her watercolors can be seen at www.donnawalshwarren.com



SIGNATURE MEMBERSHIP Arleen Barton, Chair

Points given for Art in Public Places and PBWS Exhibitions Entering Show = 1 Accepted = 1
1st Place = 4 2nd Place = 3 3rd Place = 2 Special award, Judges recognition and honorable mention = 1
Remember to keep PBWS membership active. Should a member's PBWS membership lapse, his or her accrued signature membership points shall be forfeited.

Do you have any PBWS news?

Please E-mail all member news to Donna Walsh at donna@walshwarren.com or call Carol Wedin at 561-392-9216
Deadline for Newsletter is 15th of the month.

Updates to Membership Info?

Contact Peter Notaro PJN8@columbia.edu
Call: (561) 381-7835 or mail 12278 Colony Preserve Drive, Boynton Beach, FL 33436
All Member E-mail changes should be sent to Peter

PBWS 2011 - 2012 SEASON IN A NUTSHELL

Shows & Events

-- EXHIBITS --

Armory Art Center - Members Only Exhibit November 4 - December 3, 2011 [PROSPECTUS](#)

Sugar Sands Community Park 29th Annual Members Showcase in January

Boca Raton Community Center in April

Coral Springs Open Juried Showcase in March

-- EVENTS --

- Demos at monthly meetings by professional artists

- Plein Air paint-outs 2x per month

- **NEW** this year, **STUDIO TIME** 2x per month

Three GREAT Workshops



Palm Beach Watercolor Society
P.O. Box 1916
Boca Raton, Florida 33429-1916



NEXT GENERAL MEETING THURSDAY OCT 13 2011 AT 6:30 PM
Teresa Kirk, is demo artist. The meeting is open to the public and held at the Boca Community Center, 150 Crawford Blvd. Boca Raton. The suggested donation is \$2.00 a meeting for guests.

Display Racks for Rent
Anyone needing to rent the PBWS racks to display their artwork, contact Marilyn Young. (954) 972-7222 or info@firstsign.com.



Get your own PBWS Gallery page.
Support the group, show off your talent. Don't be shy!!

Why Watercolor